



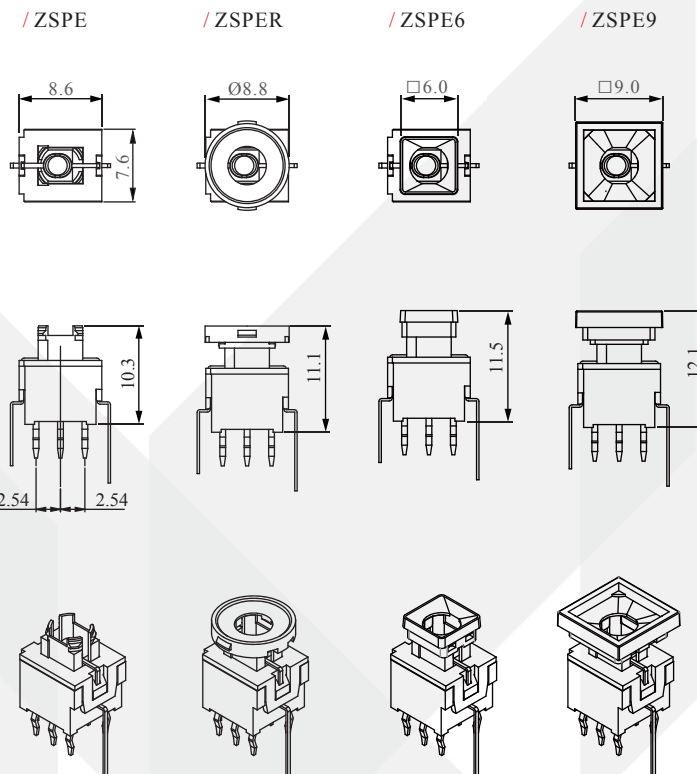
## Pushbutton Switches Series ZSPE



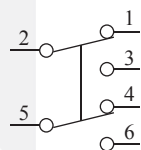
### General Specifications

- Circuit : DPDT
- Current Rating : 100 mA.
- Voltage Rating : 30 V DC
- Contact Resistance : 50 m Ohm Max(initial)
- Insulation Resistance : 100 M Ohm Min
- Operating Force : 250gf±100gf(Lock)  
150gf±100gf(Momentary)
- Total Travel : 1.5mm±0.5mm(Full stroke)  
1.0mm±0.5mm(Lock stroke)
- Mechanical Life : 10,000 Cycles Min.
- Solder Specifications : 260 °C for 3 seconds
- Operating Temperature : -10 °C ~ +70 °C
- Function : Momentary or Alternate
- Material : Poly carbonate(PC)
- Cap : Phosphor bronze (PBS) with silver plating
- Terminal : Phosphor bronze (PBS)
- Moving contact : Phosphor bronze (PBS)
- Spring : Piano wire

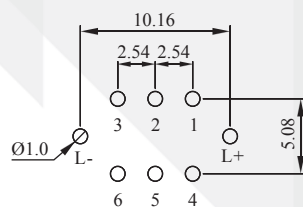
### Dimension



### Configuration



Circuit



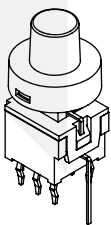
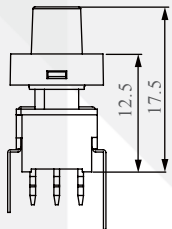
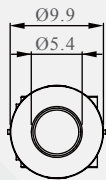
P.C.B. Mounting Holes



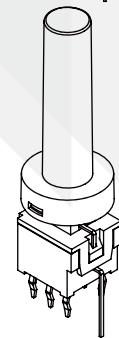
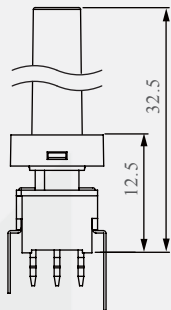
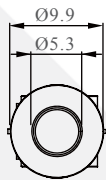
## Pushbutton Switches Series ZSPE

### Dimension

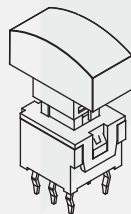
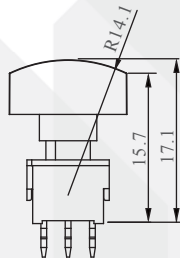
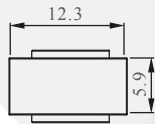
/ZSPER  
(YCA073A Cap)



/ZSPER  
(YCA074T Cap)



/ZSPE□0  
(YCA1602 Cap)



### How to Order

Z S P E □ □ □ □

Dimension Type	
--	W/O
R	Round Adapter
6	for
9	for

LED Colors	
0	Without LED
1	Red
2	Yellow
3	Green
7	Blue

Switch Function	
M	Momentary
A	Alternate

Diffuser Colors	
--	Without
4	White

\*For ZSPE9 with □9 Transparent Smart Cap



Cap Style / Color	
YCA1602	Yellow

For ZSPE

Cap Style / Color	
YCA073A	Shaft=5.0mm / Ice
YCA074T	Shaft=20.0mm / Transparent

For ZSPER

EXAMPLE:  
ZSPE6M1SC06YCA019B

From Page 49      From Page 39

Page 31

Page 33

For ZSPE6

Page 49

Page 39

Page 49

Page 46

For ZSPE9

Page 39