



Right Angle Tactile Switches Series SPJ



PAT. I341543
PAT. ZL 2007 2 0306718.9

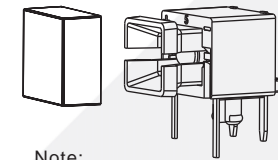
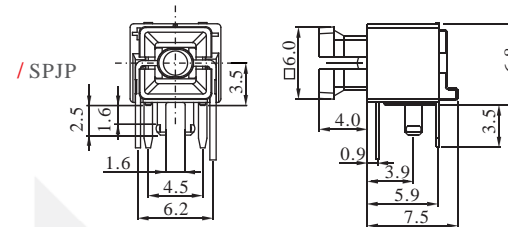
General Specifications

Current Rating :50mA
Voltage Rating :12VDC
Dielectric Withstanding Voltage :250VAC for 1 minute
Contact Resistance :100m Ohm Max.(initial)
Insulation Resistance :100M Ohm Min.
Operating Force :200gf±50gf
Total Travel :0.3mm±0.1mm
Mechanical Life :1,000,000 cycles Min.
Function :Momentary(SPST)
Operating Temperature :-10 °C ~ +60 °C

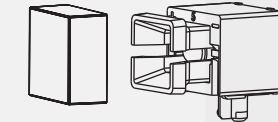
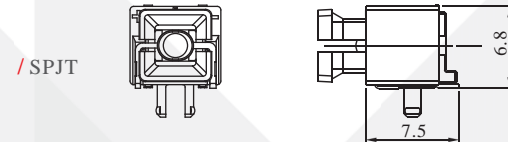
Materials

Cap :Polycarbonate (PC)
Base :Polyamide (PA)
Reflector :Polyamide (PA)
Switch Terminal :Brass with gold plating
Action Dome :Stainless steel with silver plating
Sealing rubber :Silicone

Dimension

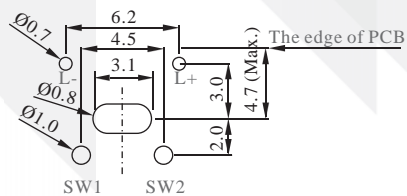


Note:
*Fit cap **AFTER** soldering process.

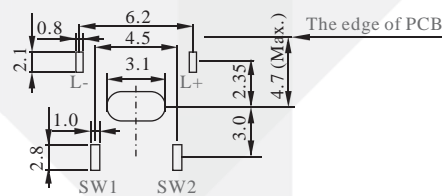


Note:
*Fit cap **AFTER** soldering process.

PCB layout & Circuit Diagram

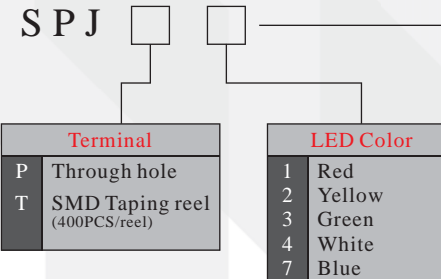


/ Through hole type - SPJP



/ SMD type - SPJT

How to Order



EXAMPLE:
SPJPI YCA044TD
From Page 33



6
Page 33

9
6
Page 49

9
Page 39

12
6
Page 49

12
Page 46