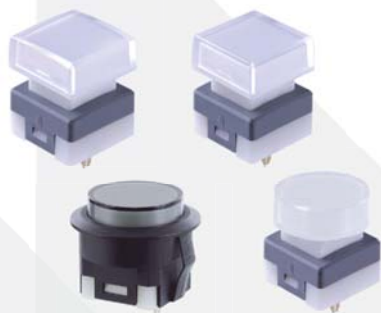




ShanPu

Illuminated Silent key Switch SPG4



PAT. US8,129,640
PAT. I376716
PAT. ZL 2010 1 0102778.5

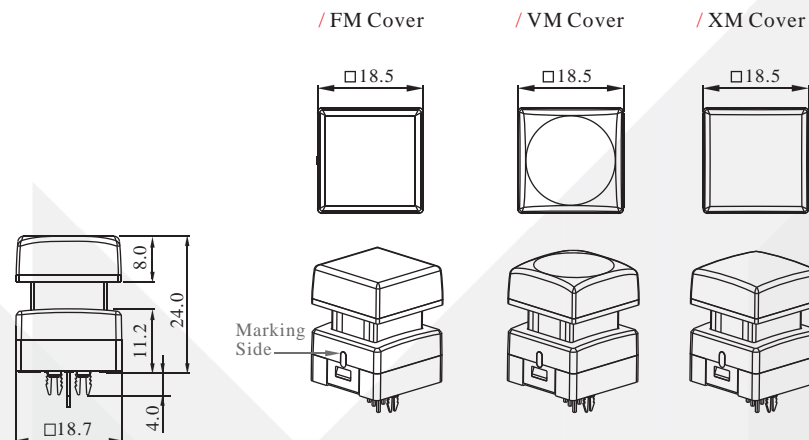
General Specifications

Current Rating :50mA
Voltage Rating :48VDC
Contact Resistance :100m Ohm (initial)
Insulation Resistance :100M Ohm Min.
Operating Force :250gf ± 50gf
Total Travel :4.5mm±0.20mm
Mechanical Life :5,000,000 cycles Min.
Solder Specifications :260 °C for 3 seconds
Function :Momentary(SPST)
Operating Temperature :-25 °C ~ +70°C

Materials

Cover :Polycarbonate (PC)
Cap :Polycarbonate (PC)
Reflector :Polyoxymethylen (POM)
Base-Cap :Polyamide (PA)
Moving contact :Phosphor Bronze with gold plating
Base :Polyamide (PA)
Terminal :Brass with gold plating
Spring :Piano wires
Rubber washer :NBR

Dimension

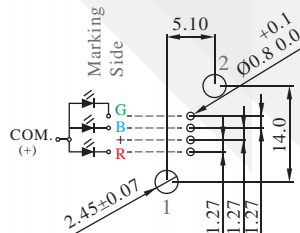


PCB layout & Circuit Diagram

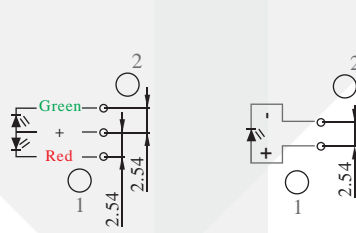
/ Switch



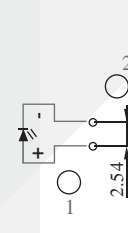
/ RGB LED



/ Dual LED



/ Single LED



How to order

SPG4

Operating Force	
--	Standard
T	Tactile feeling

LED Color	
5	Pure Green
D	Red/Pure Green
9	RGB Full color

Diffuser Color	
4	White

Cover style	
FM	Flat Matt
VM	Concave Matt
XM	Convex Matt

EXAMPLE :
SPG4T-9-4-VM



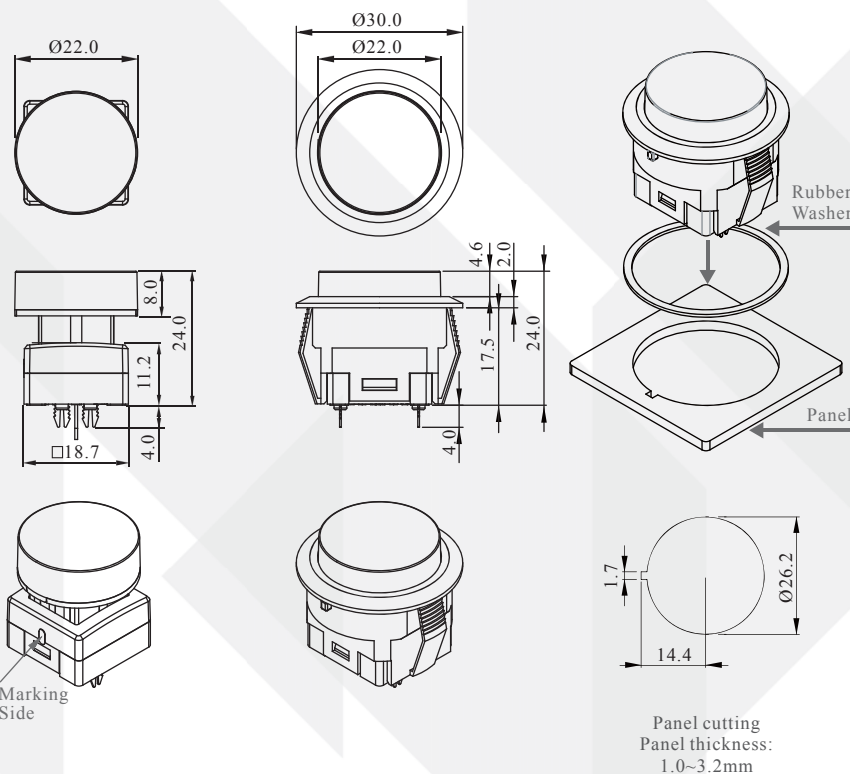
ShanPu

Illuminated Silent key Switch SPG4

Dimension of Round Cap

/ SPG4□-□-□-4-A□□□

/ SPG4□-□-□-4-R□A□□□



How to Order (Round Cap)

SPG4 □ — □ — □ — □ □ □ □ □ □ □ □

Operating Force

--	Standard
T	Tactile feeling

LED Color

5	Pure Green
D	Red/Pure Green
9	RGB Full color

Diffuser color

4	White
---	-------

Housing type

--	Without
R	Round

Cover Size

A	φ 22.0
---	--------

Cover Style / Color

FC	Flat Clear
	Transparent
FCC	Flat Clear
	Transparent Black

Housing color

--	Without
4	White
5	Black

EXAMPLE :
SPG4-5-4-R5AFC